



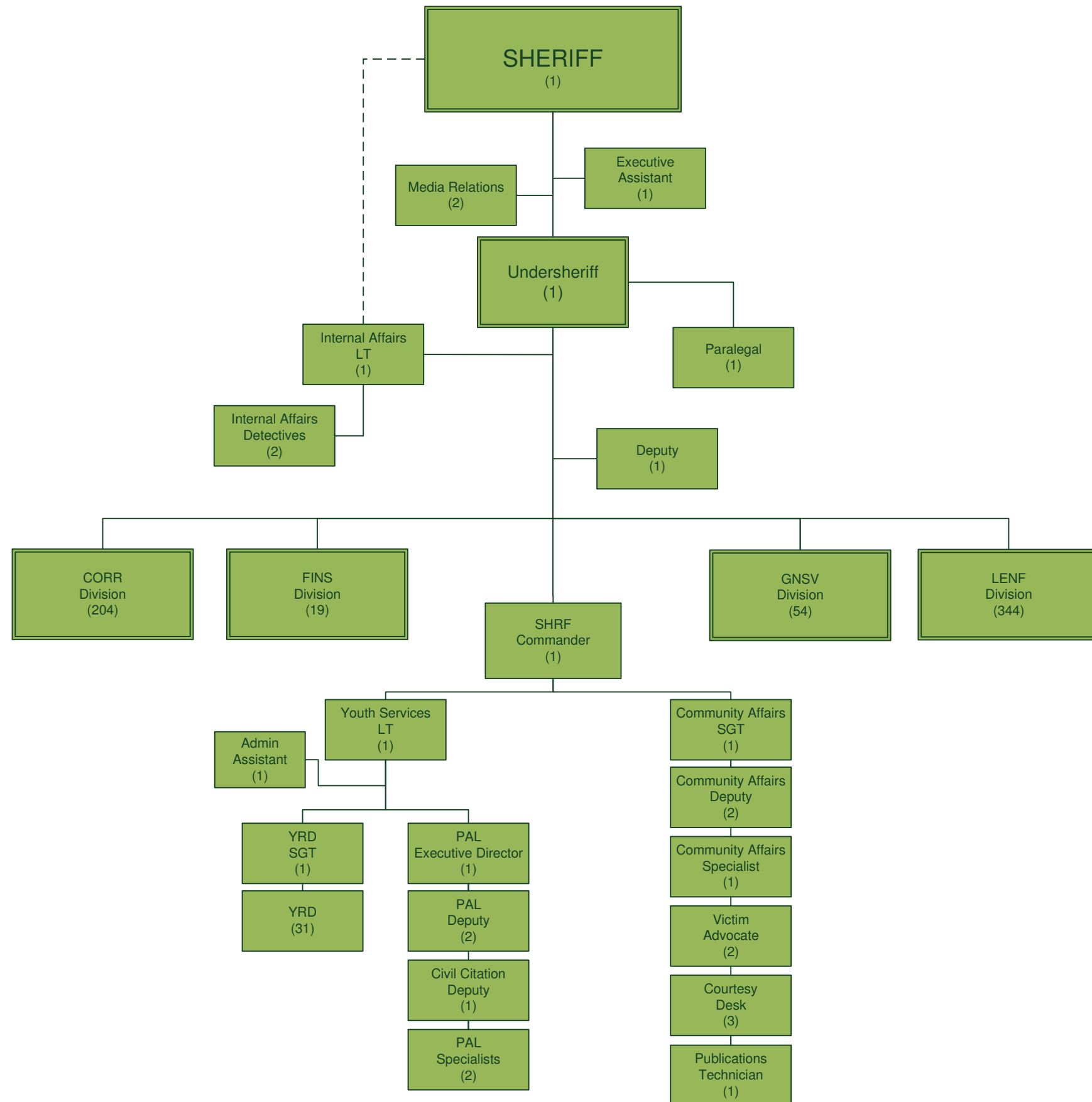
ST. JOHNS COUNTY SHERIFF'S OFFICE

ORGANIZATIONAL CHART
NOVEMBER 13, 2018

681 FTEs
Agency Wide

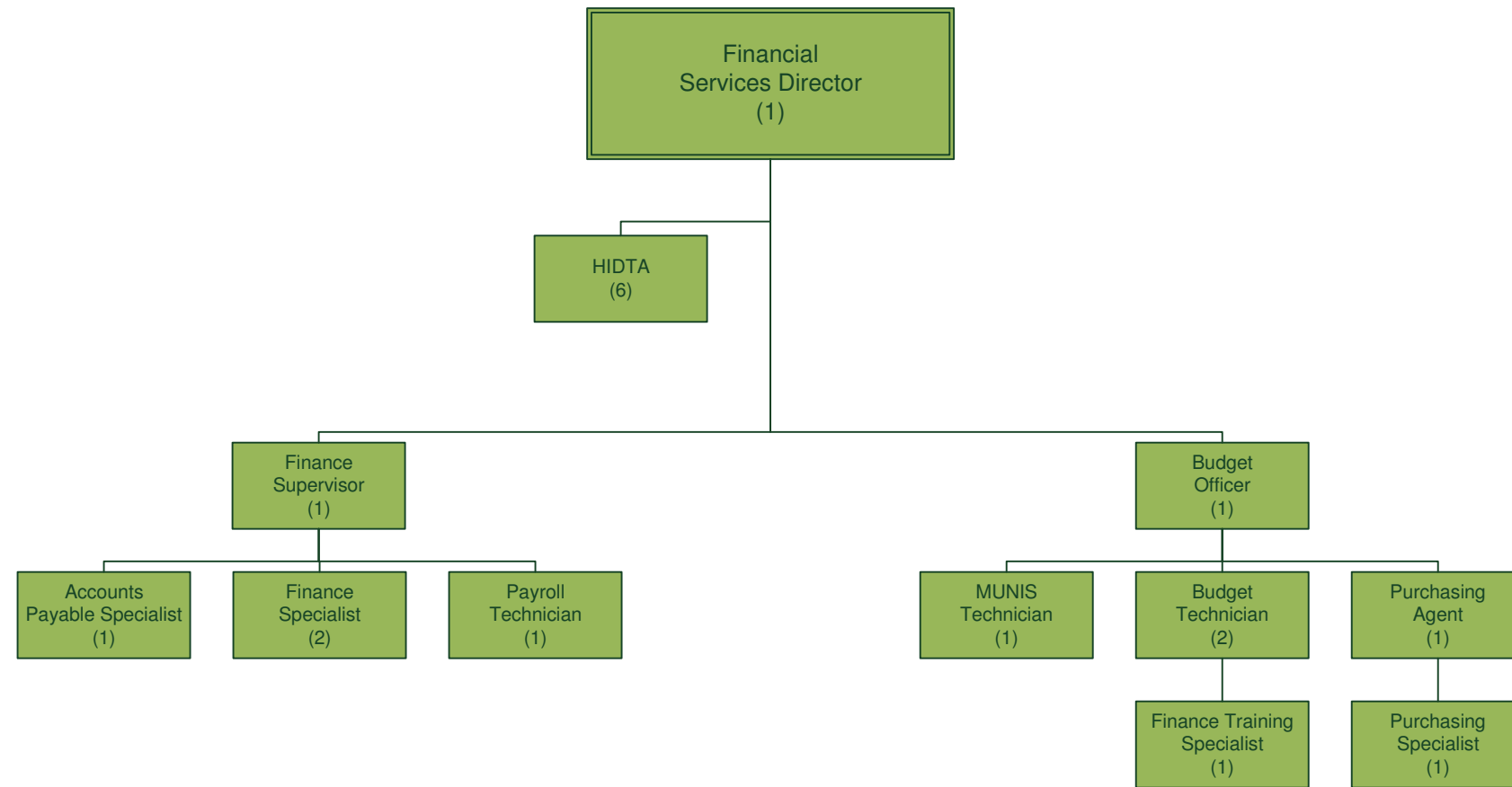
Office of the Sheriff

61 FTEs



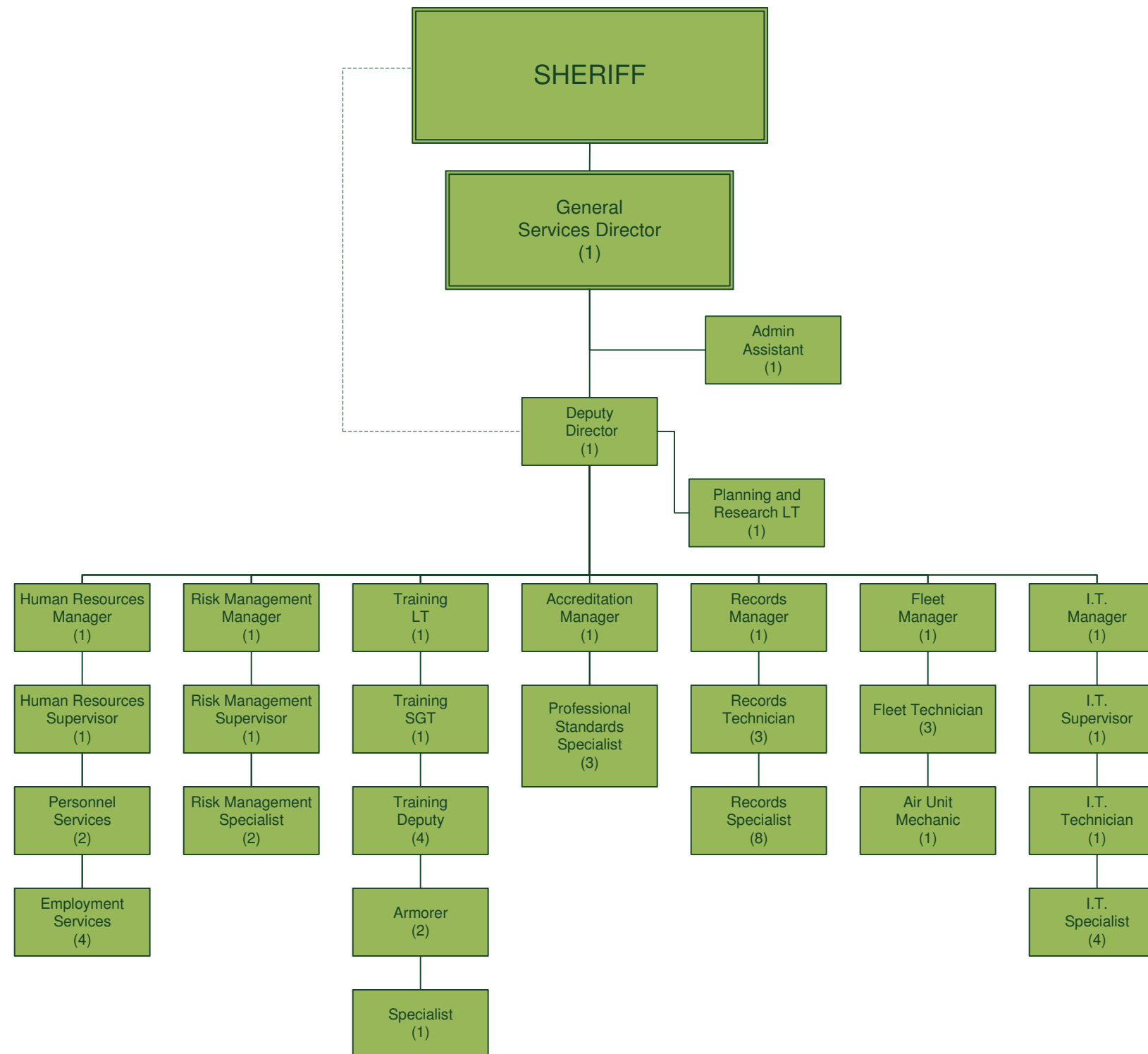
Division of Financial Services

19 FTEs



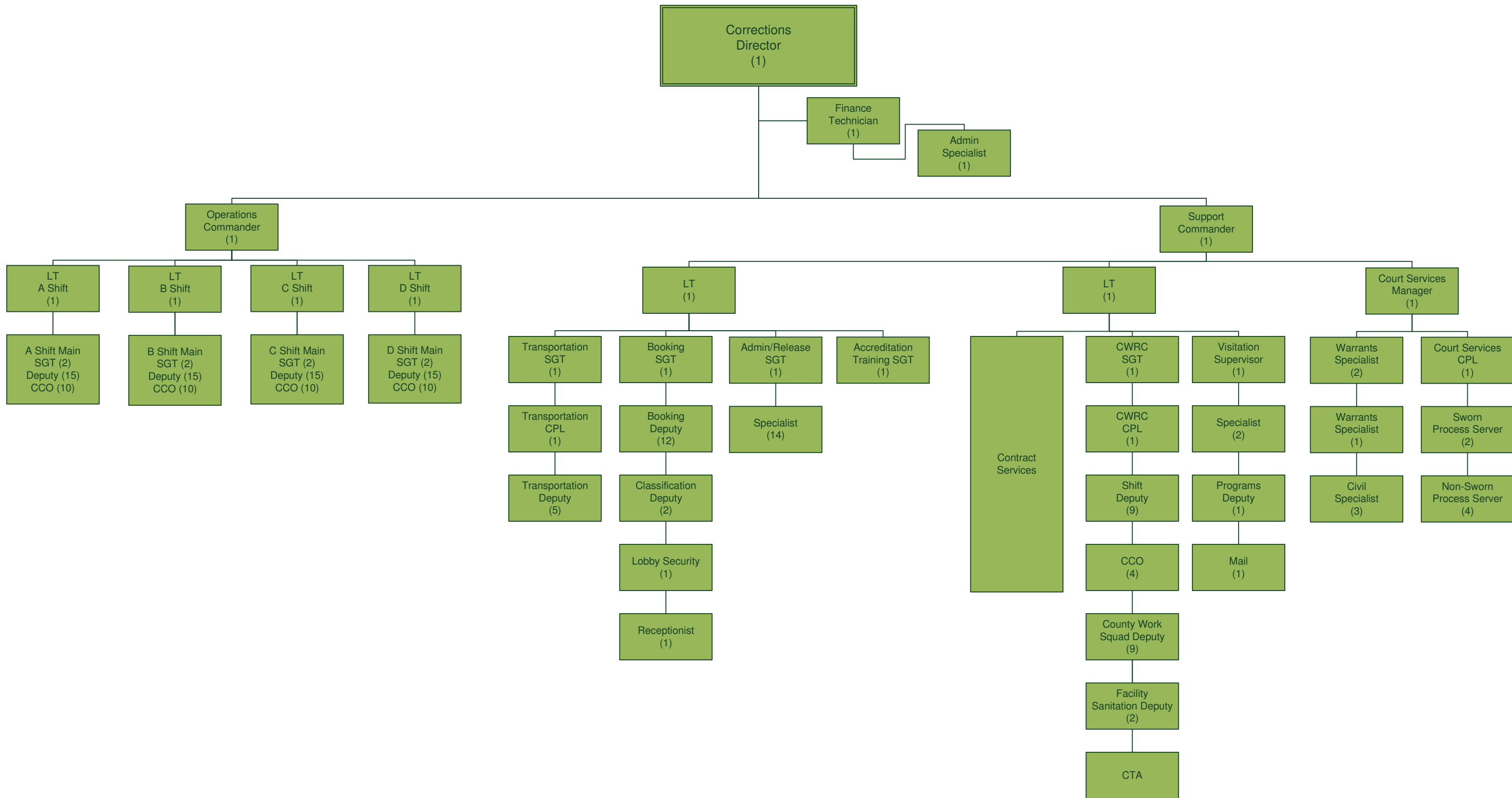
Division of General Services

53 FTEs



Division of Corrections

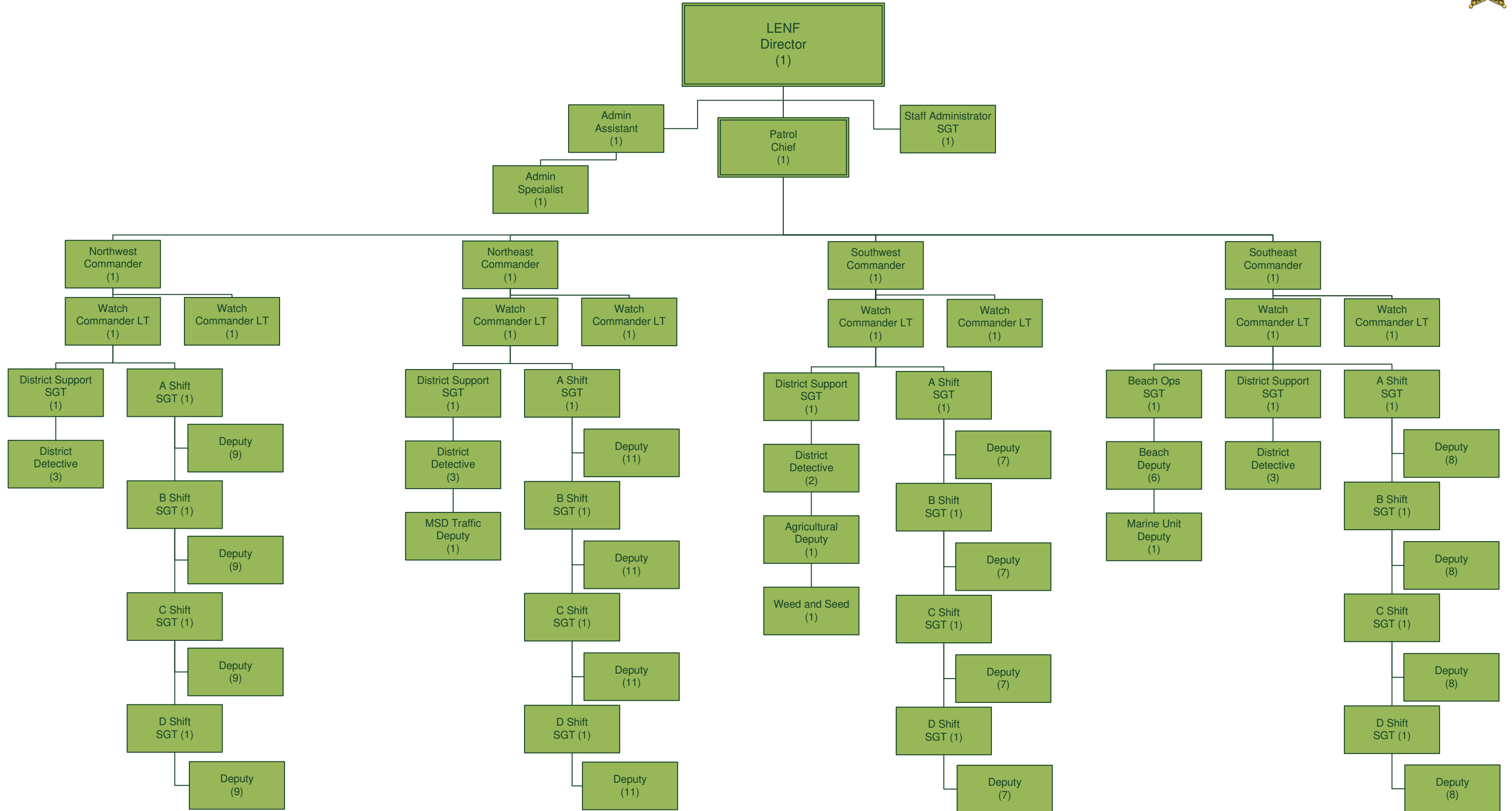
204 FTEs



Division of Law Enforcement

Patrol

199 FTEs

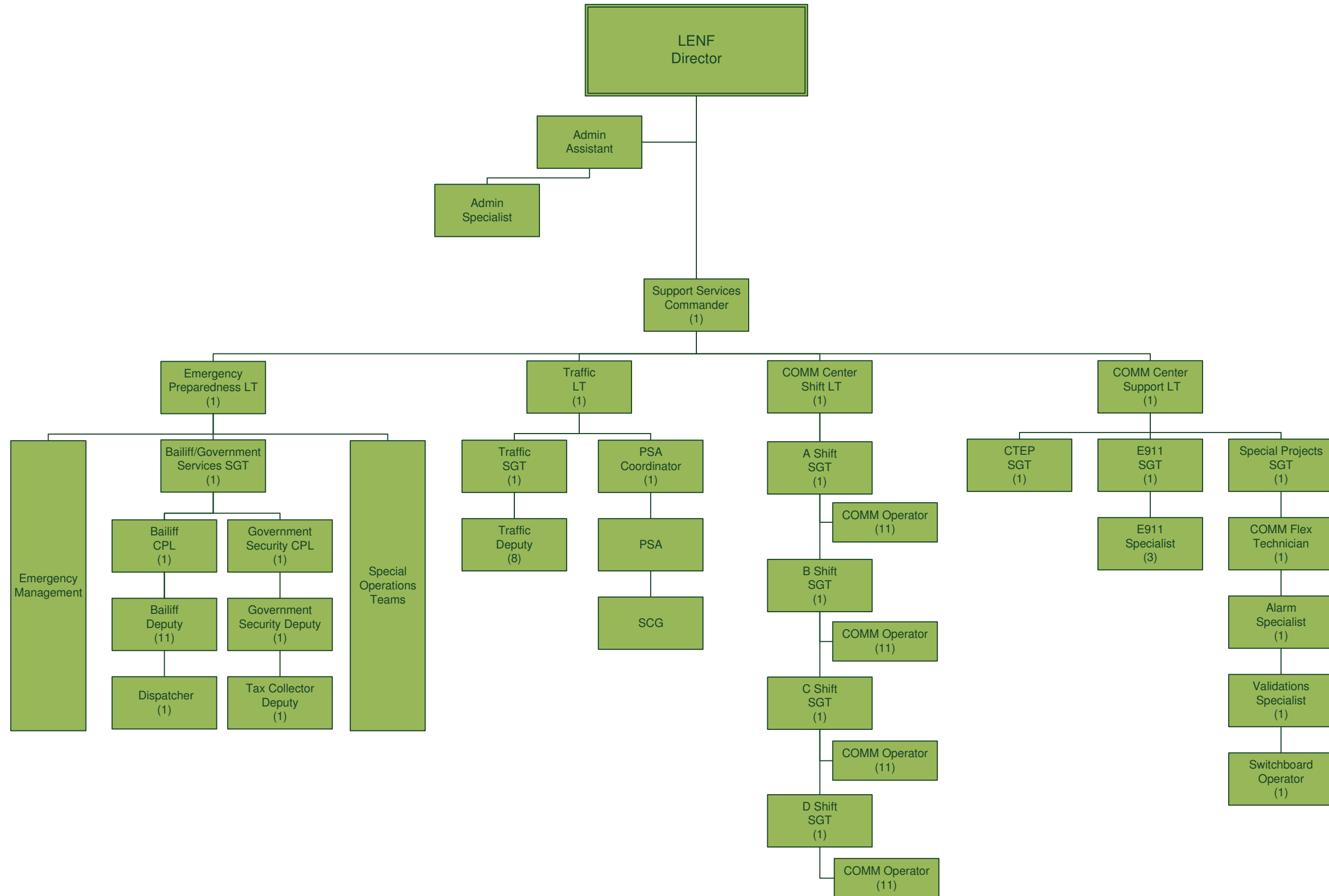


Division of Law Enforcement

90 FTEs



Central



Division of Law Enforcement

55 FTEs



Investigations

