



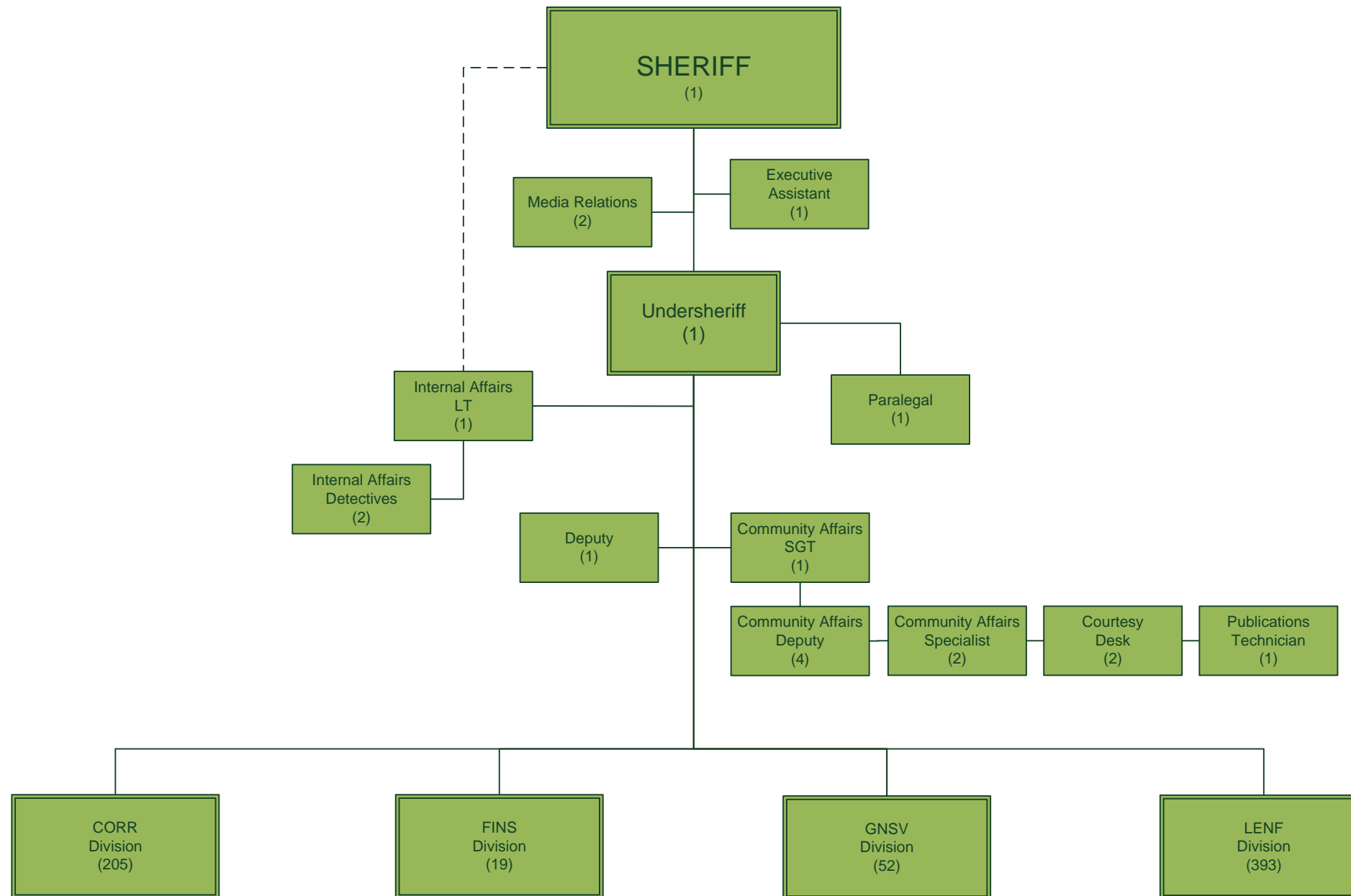
# ST. JOHNS COUNTY SHERIFF'S OFFICE

ORGANIZATIONAL CHART  
FEBRUARY 21, 2019

689 FTEs  
Agency Wide

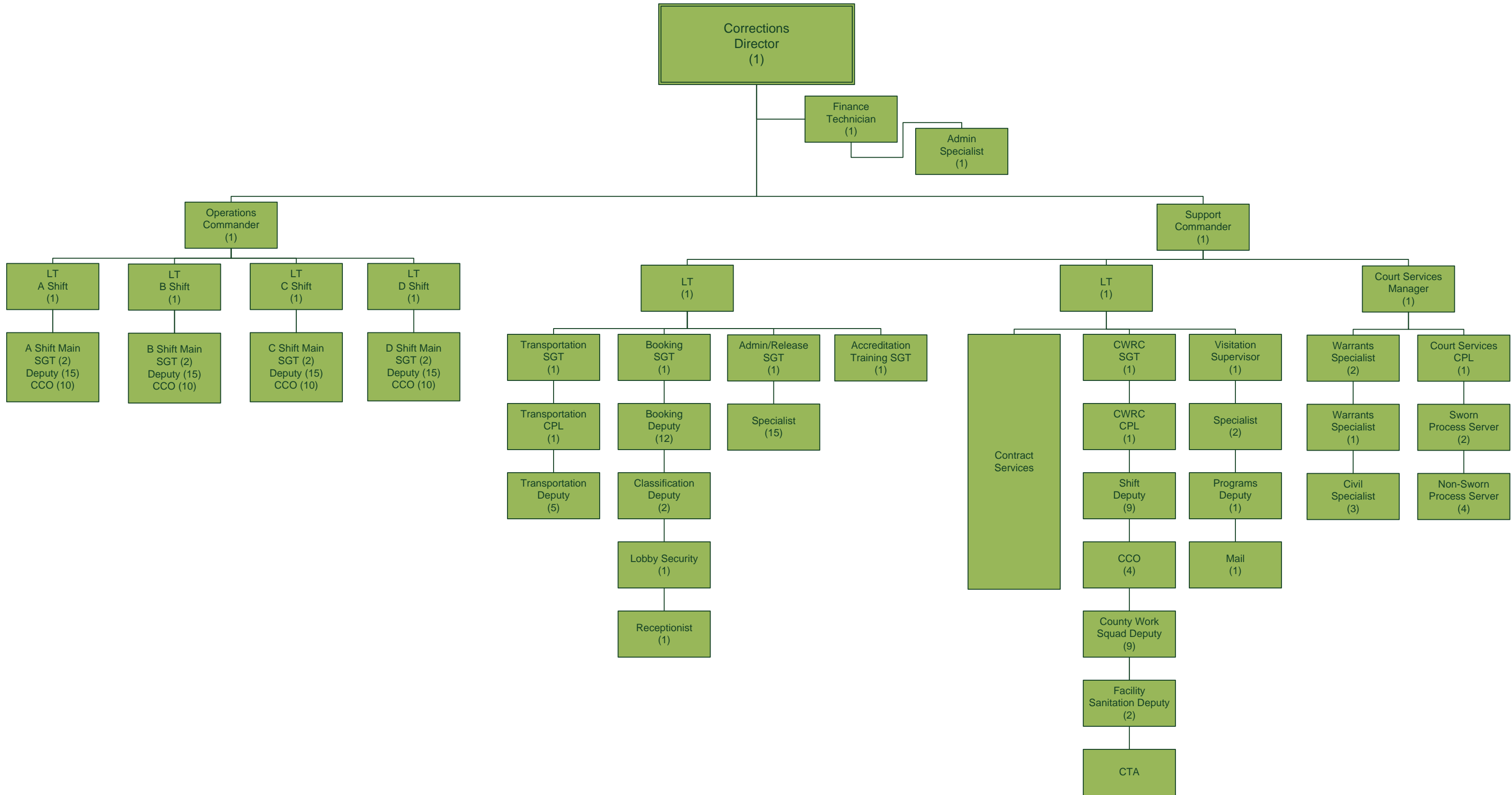
# Office of the Sheriff

20 FTEs



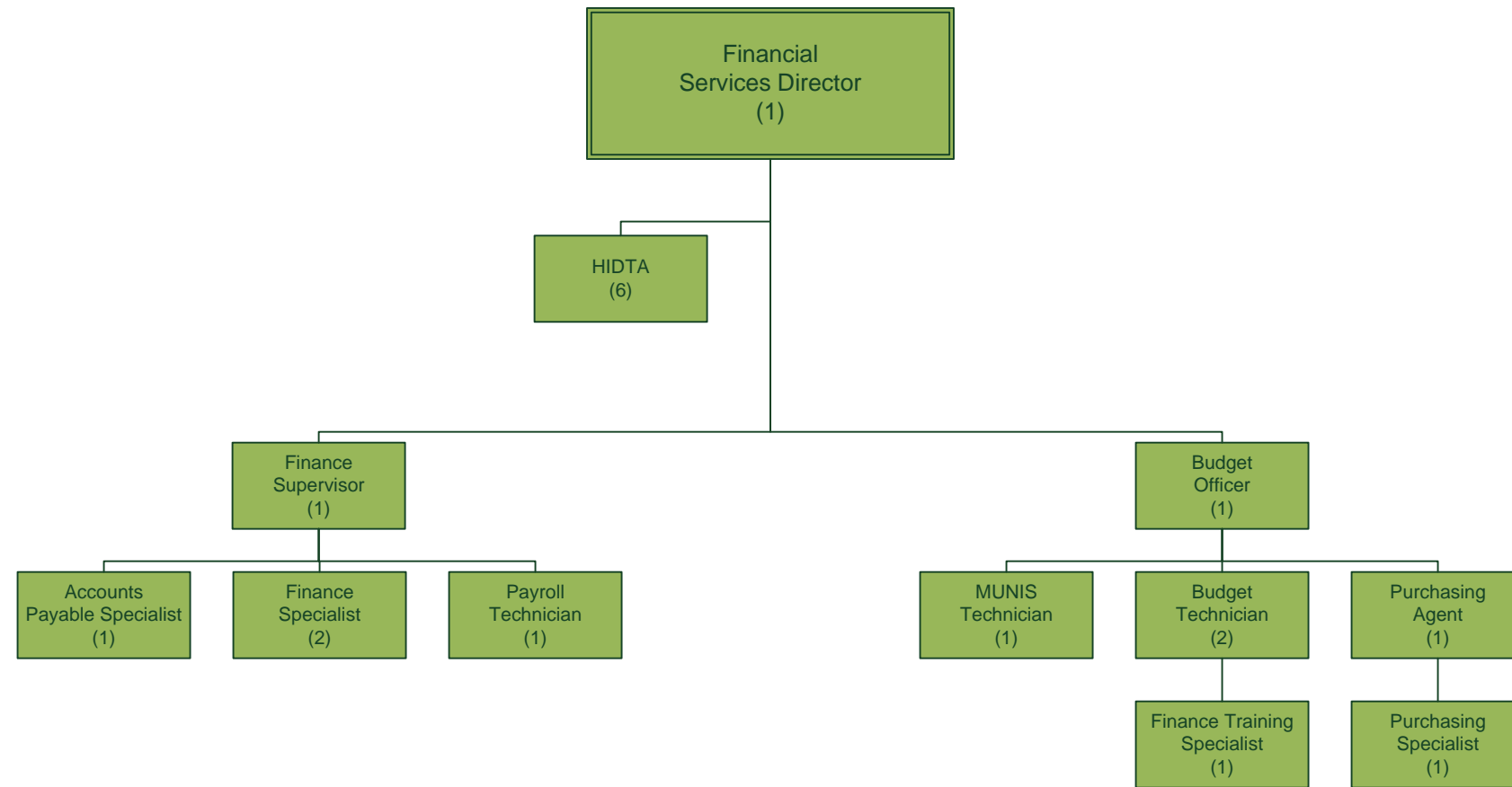
# Division of Corrections

205 FTEs



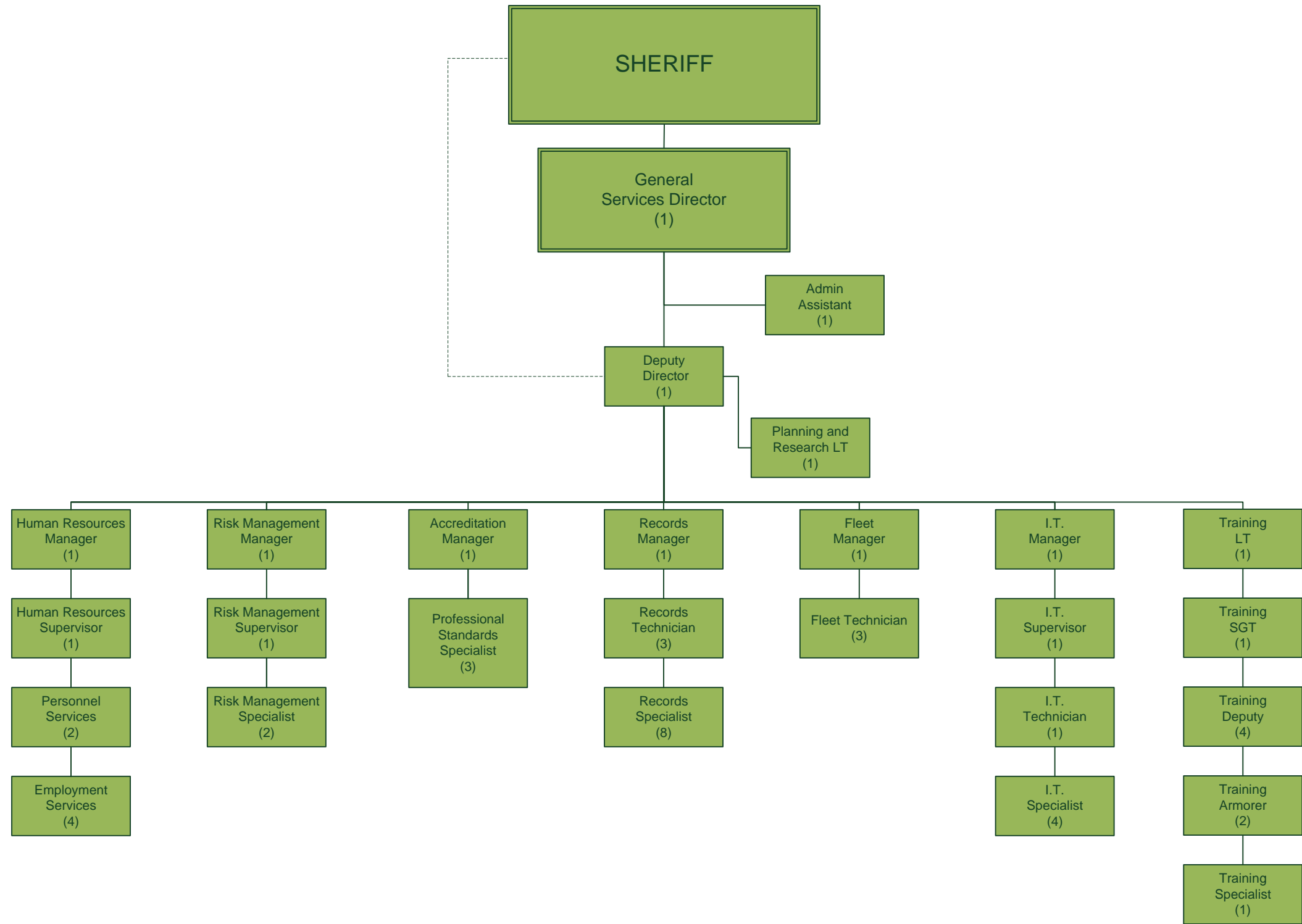
# Division of Financial Services

19 FTEs



# Division of General Services

52 FTEs





Proposed FTEs  
FY18-19

Transferred FTEs  
From Another  
Division

# Division of Law Enforcement

143 FTEs



## Central Bureau

LENF  
Director

Admin  
Assistant

Admin  
Specialist

Central Bureau  
Chief  
(1)

INVS  
Commander  
(1)

Support  
Commander  
(1)

