



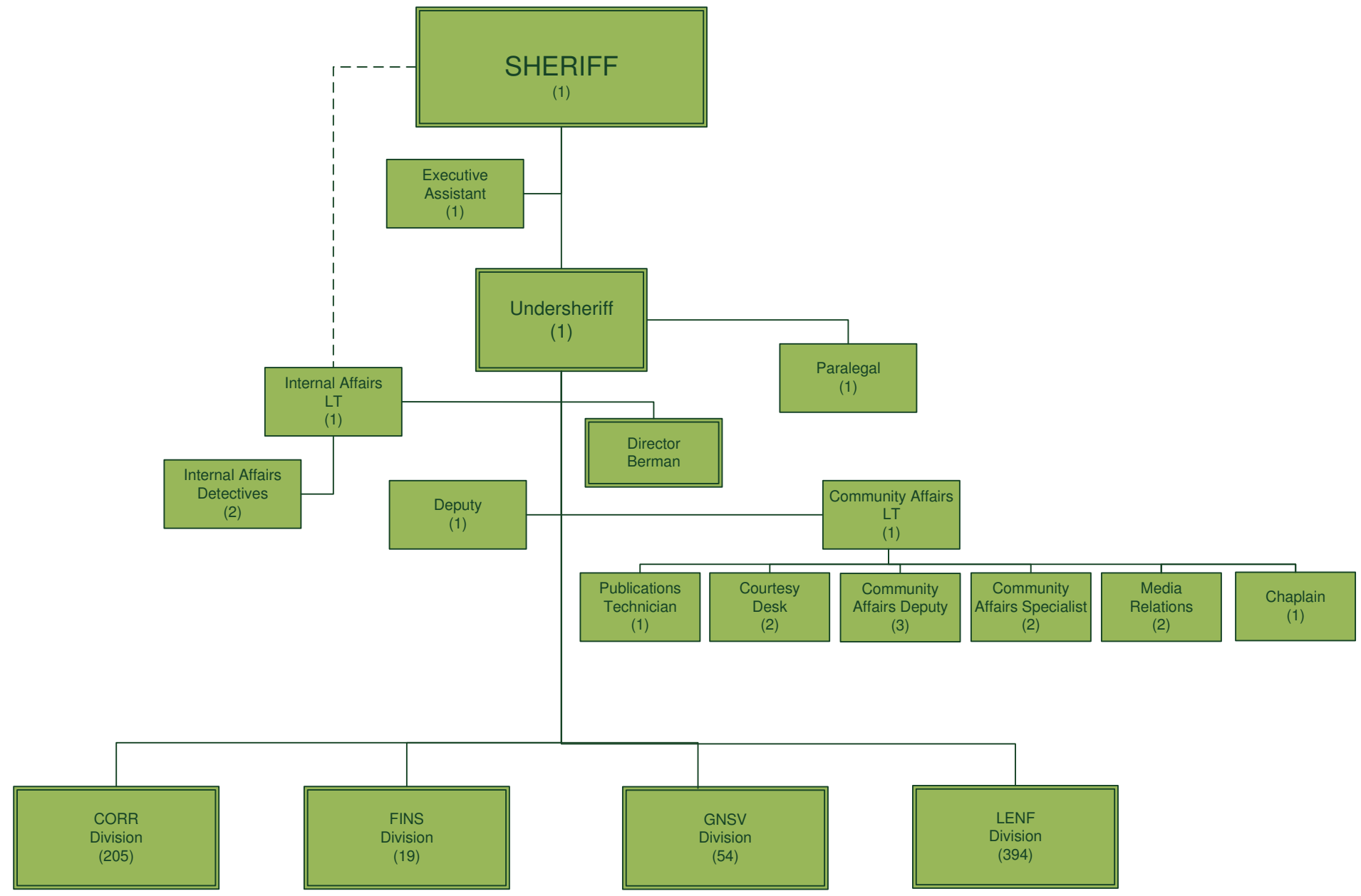
ST. JOHNS COUNTY SHERIFF'S OFFICE

ORGANIZATIONAL CHART
June 19, 2019

691 FTEs
Agency Wide

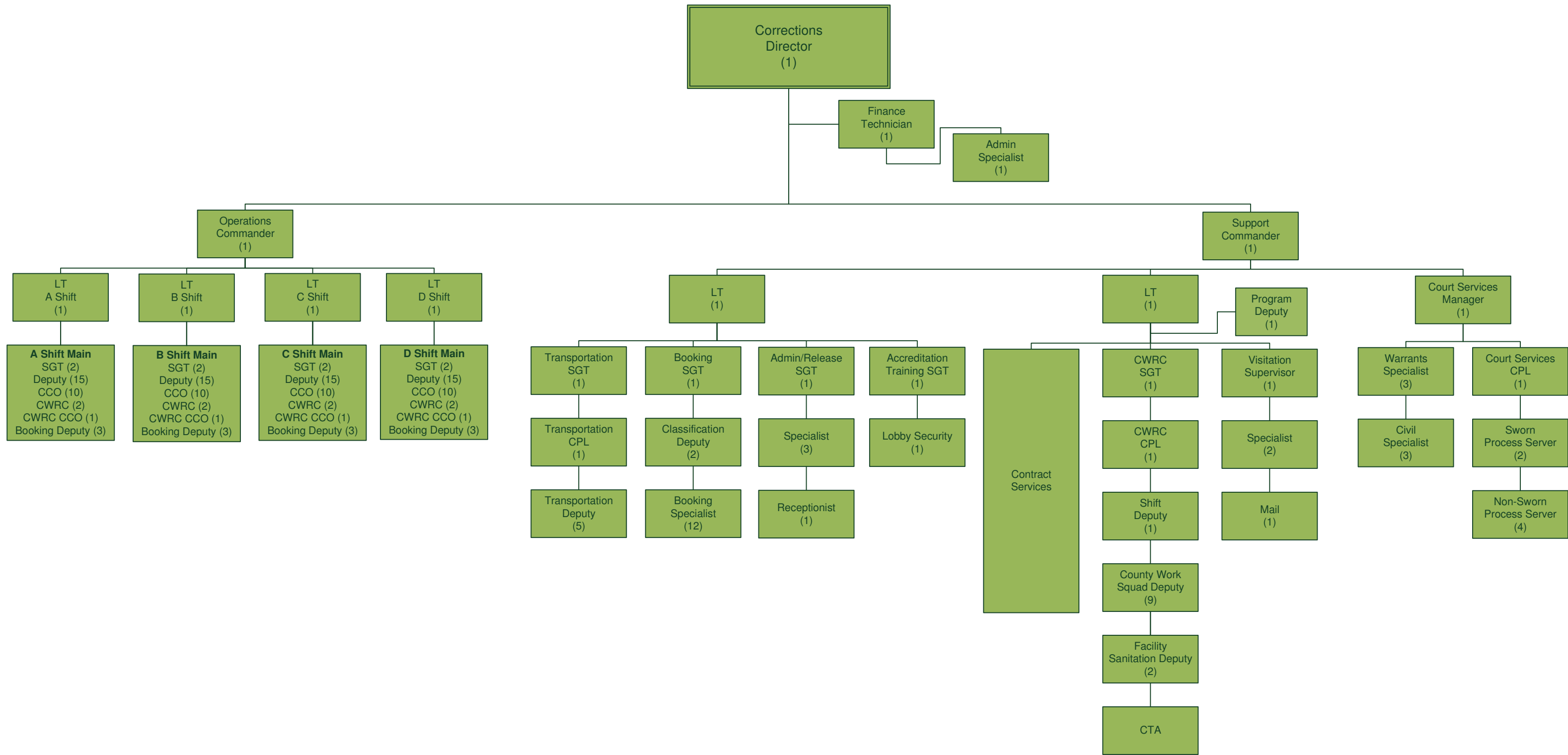
Office of the Sheriff

20 FTEs



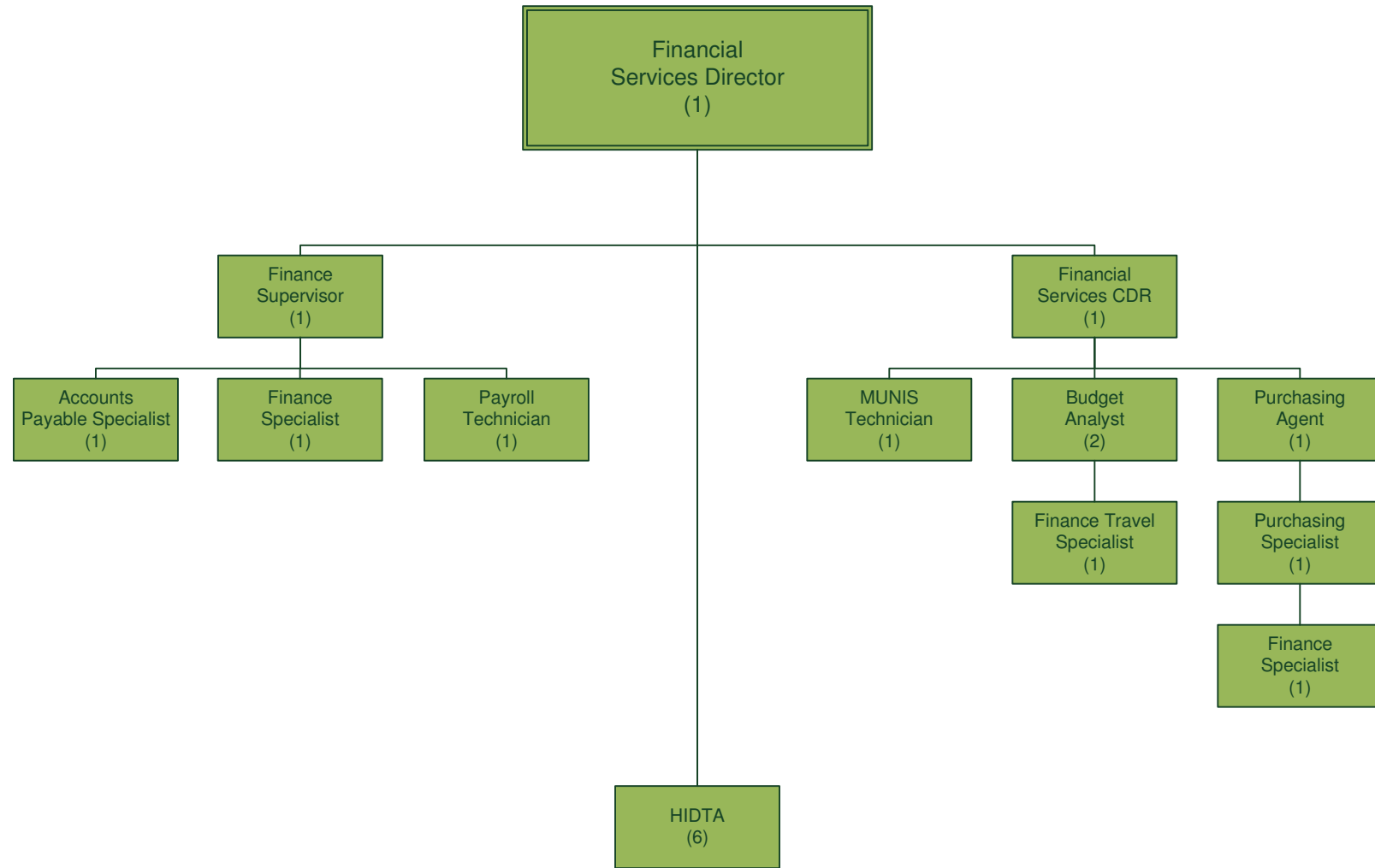
Division of Corrections

205 FTEs



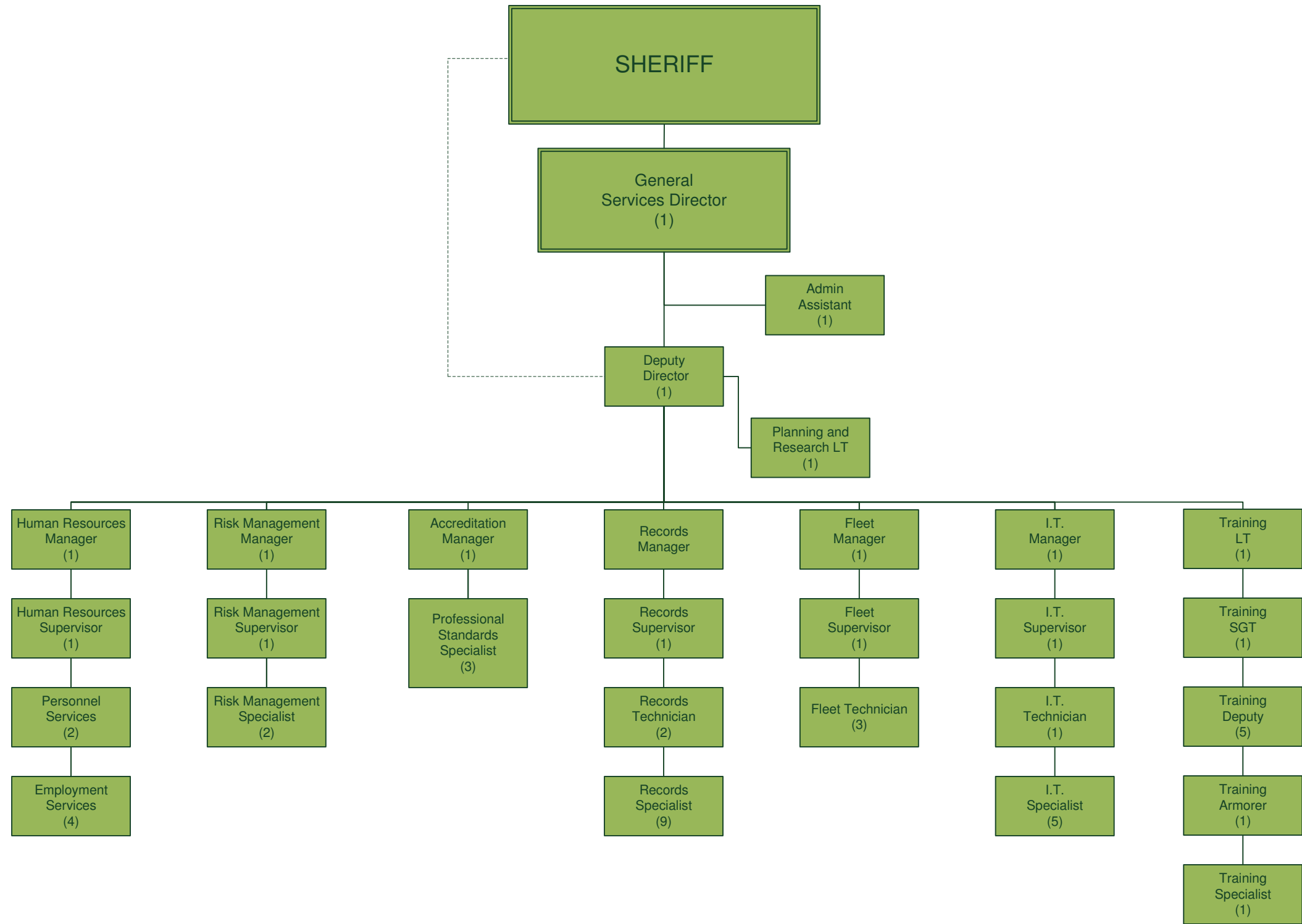
Division of Financial Services

19 FTEs



Division of General Services

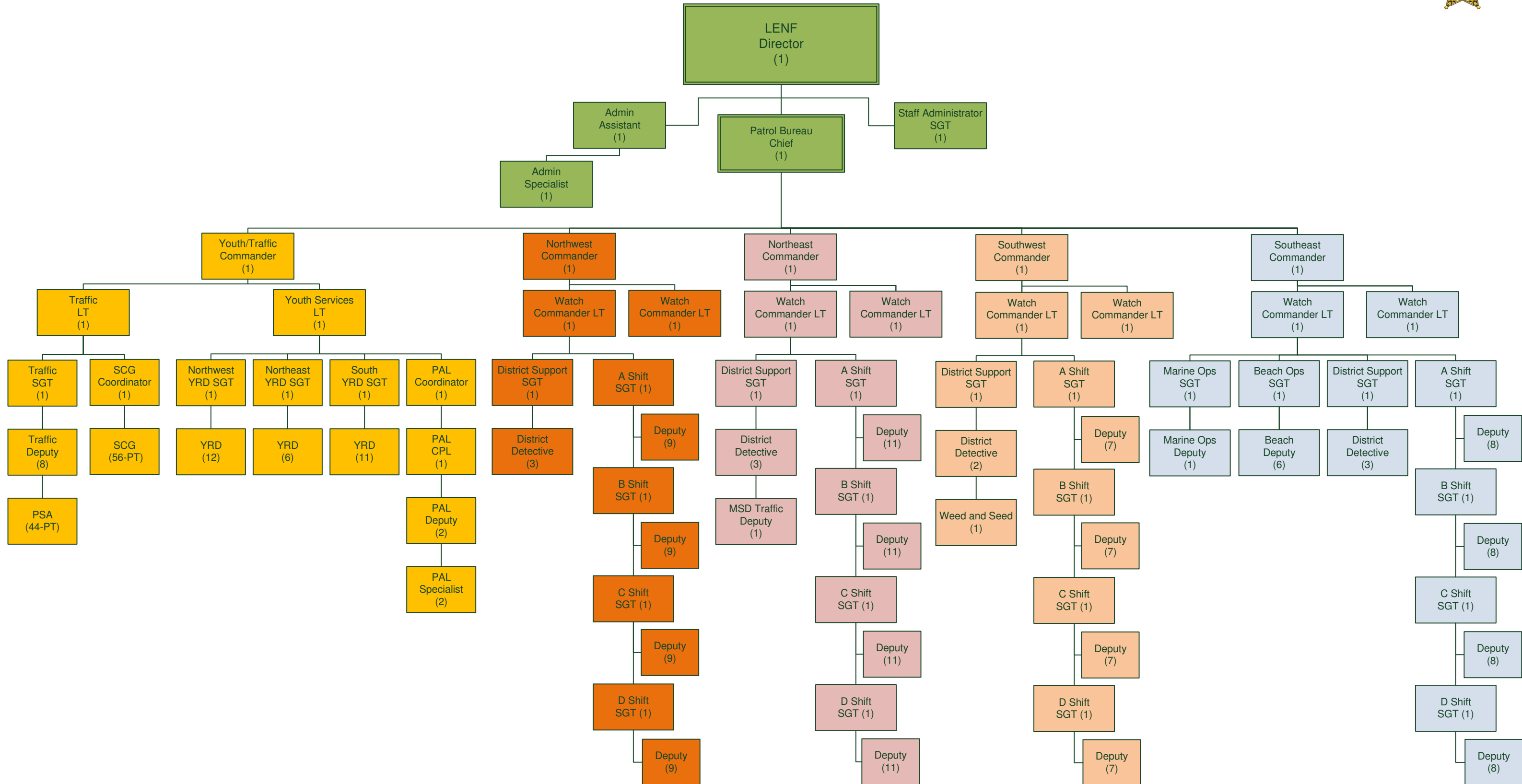
54 FTEs



Division of Law Enforcement

Patrol Bureau

250 FTEs



Division of Law Enforcement

Central Bureau

143 FTEs

