



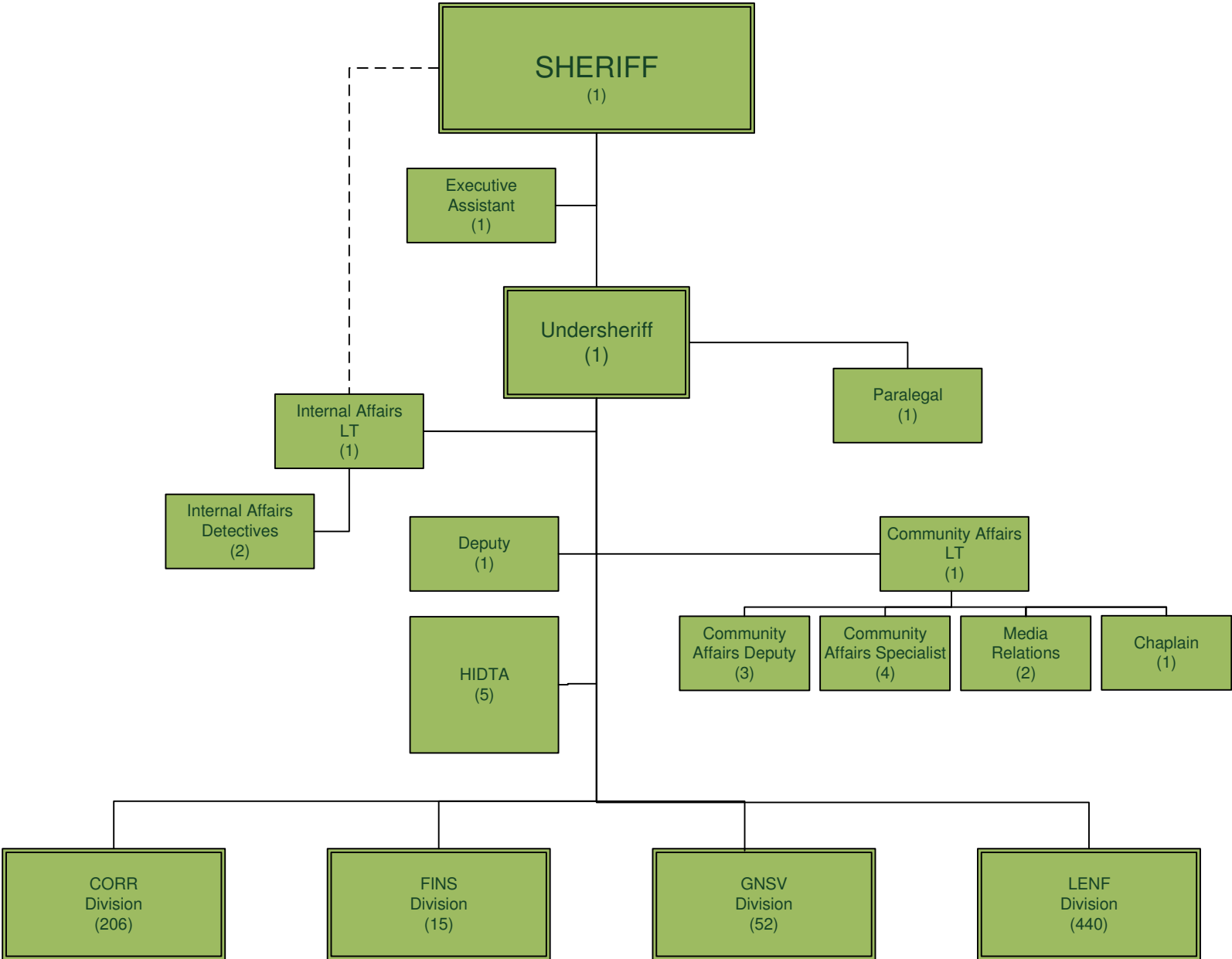
ST. JOHNS COUNTY SHERIFF'S OFFICE

ORGANIZATIONAL CHART
September 1, 2020

737 FTEs
Agency Wide

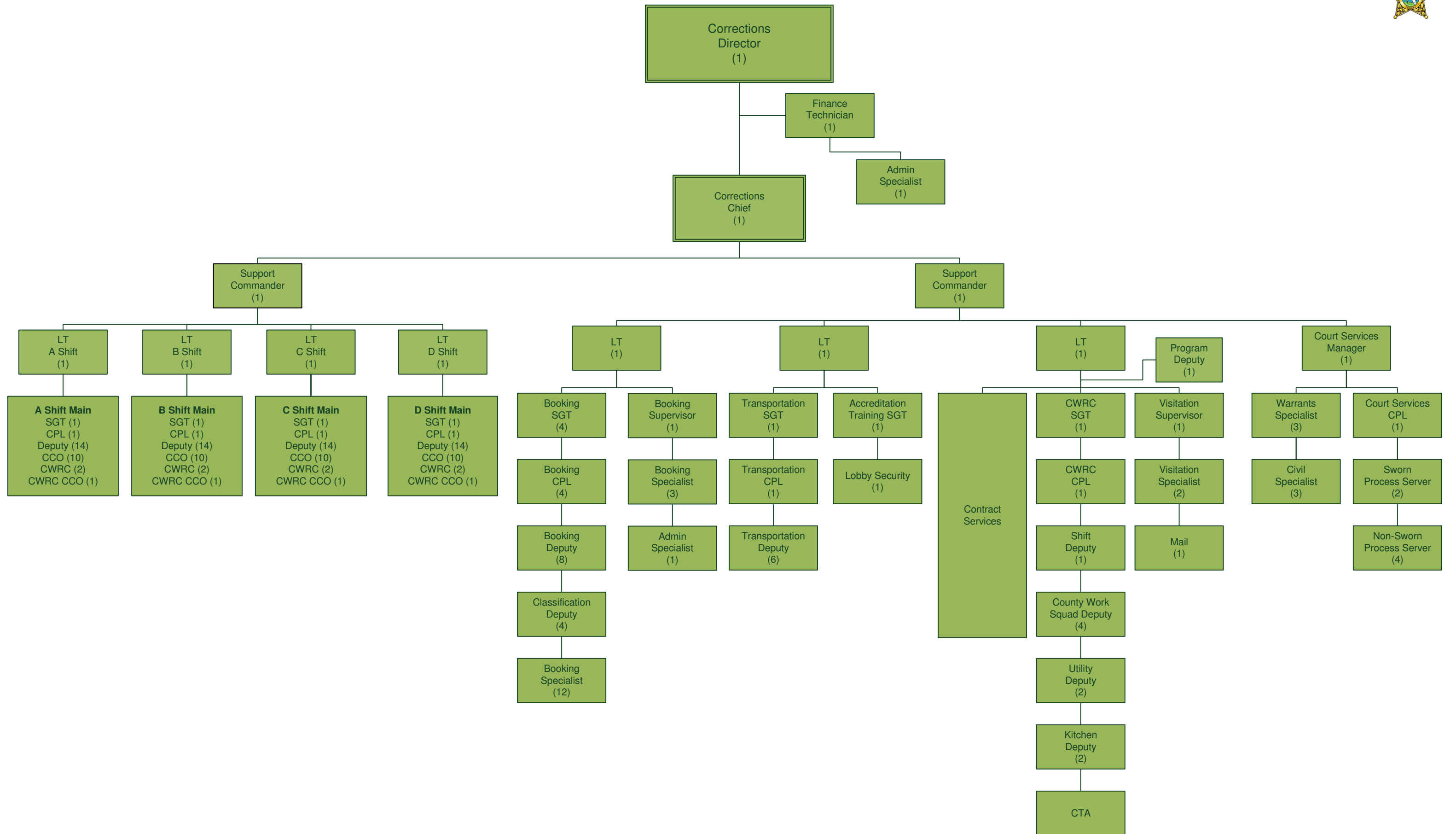
Office of the Sheriff

24 FTEs



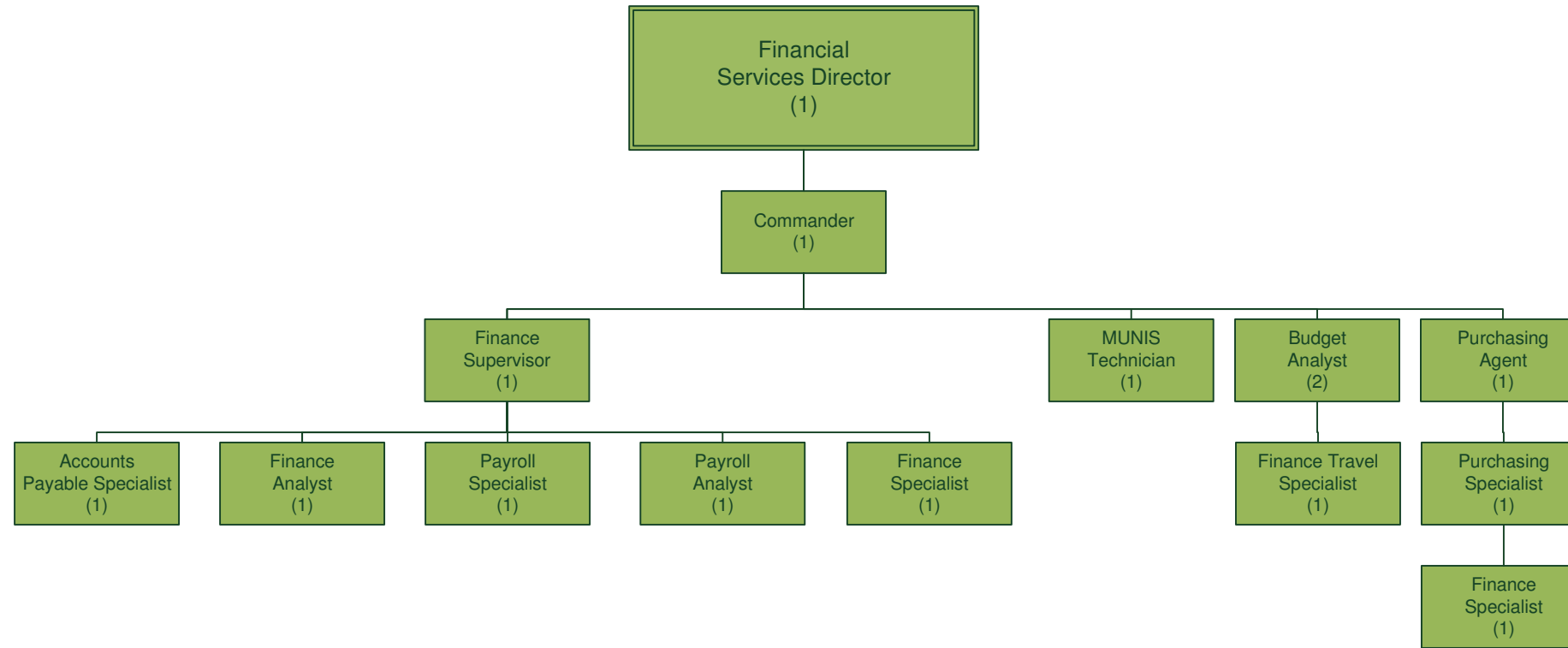
Division of Corrections

206 FTEs



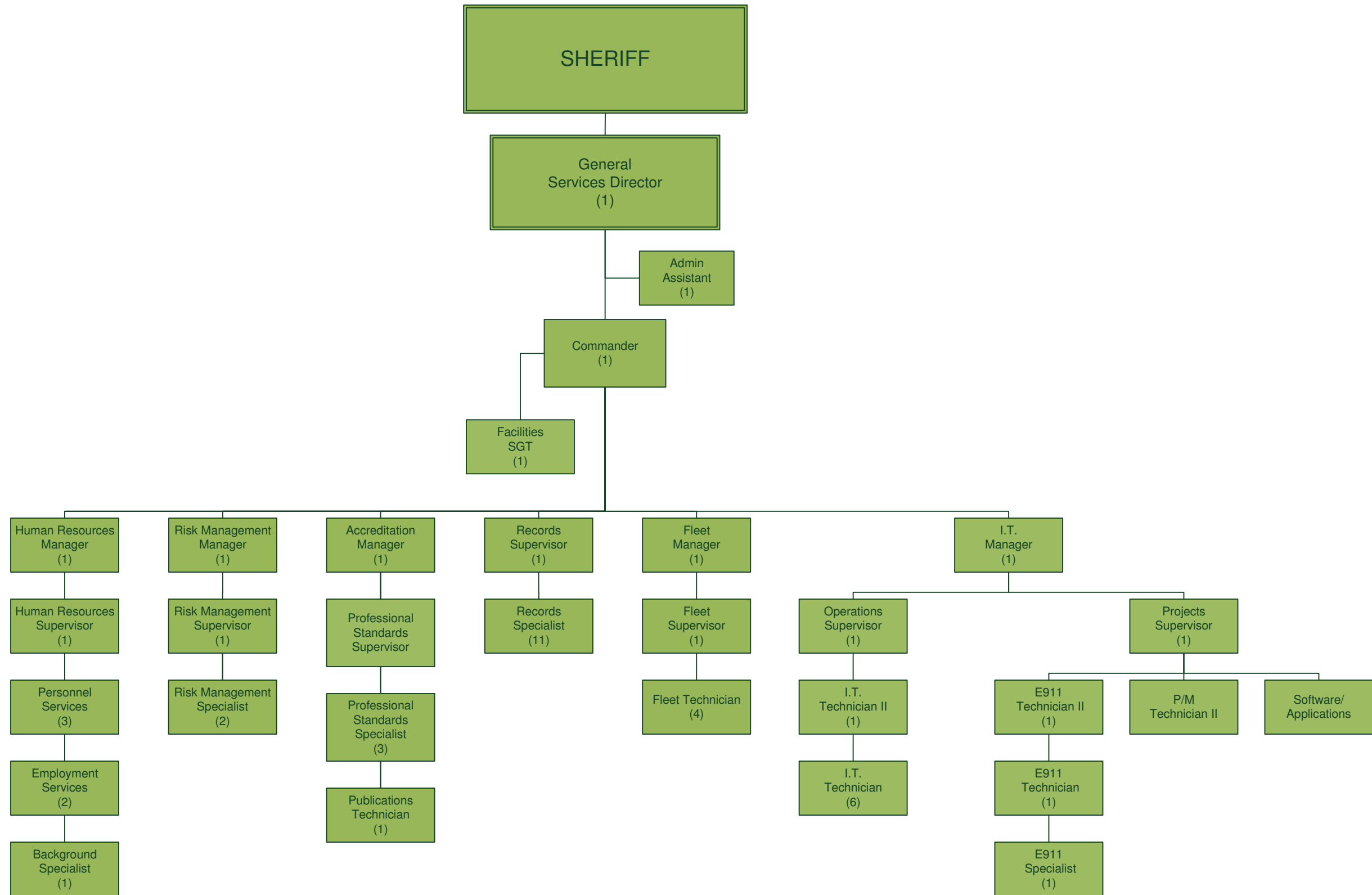
Division of Financial Services

15 FTEs



Division of General Services

52 FTEs



Division of Law Enforcement

281 FTEs

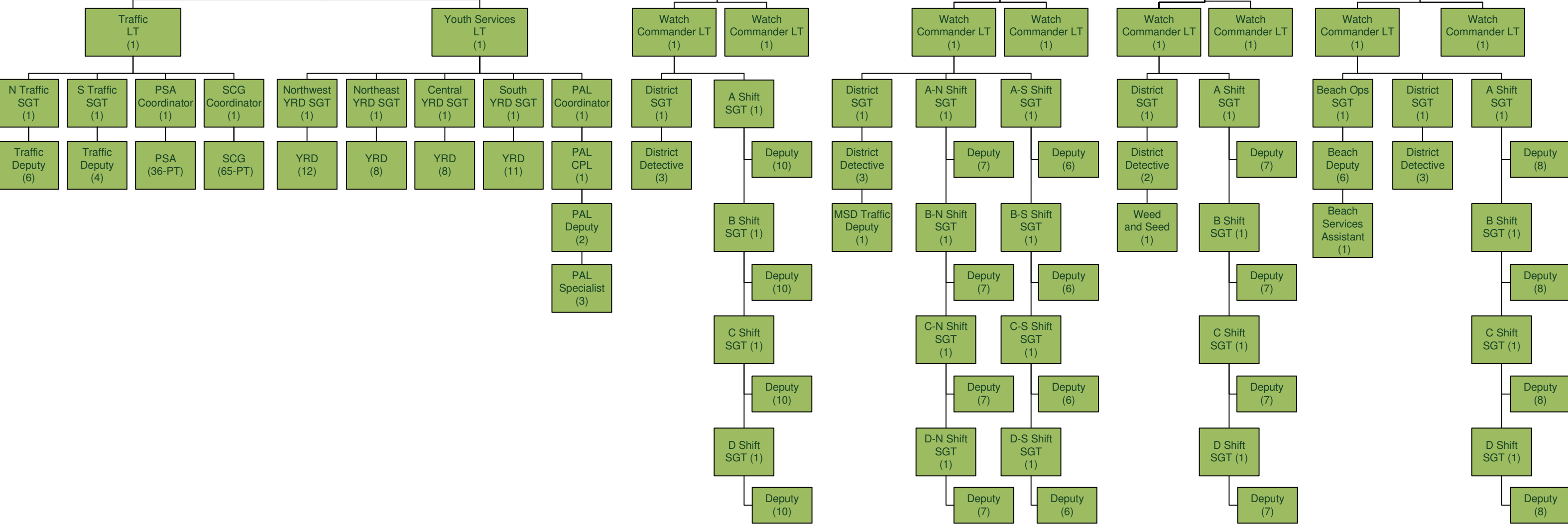


Patrol Bureau

LENF Director (1)

Admin Assistant (1)
 Admin Specialist (1)
 Patrol Bureau Chief (1)
 Staff Administrator/ FTEP SGT (1)

Youth/Traffic Commander (1)
 Northwest Commander (1)
 Northeast Commander (1)
 Southwest Commander (1)
 Southeast Commander (1)



Division of Law Enforcement

Central Bureau

159 FTEs

