



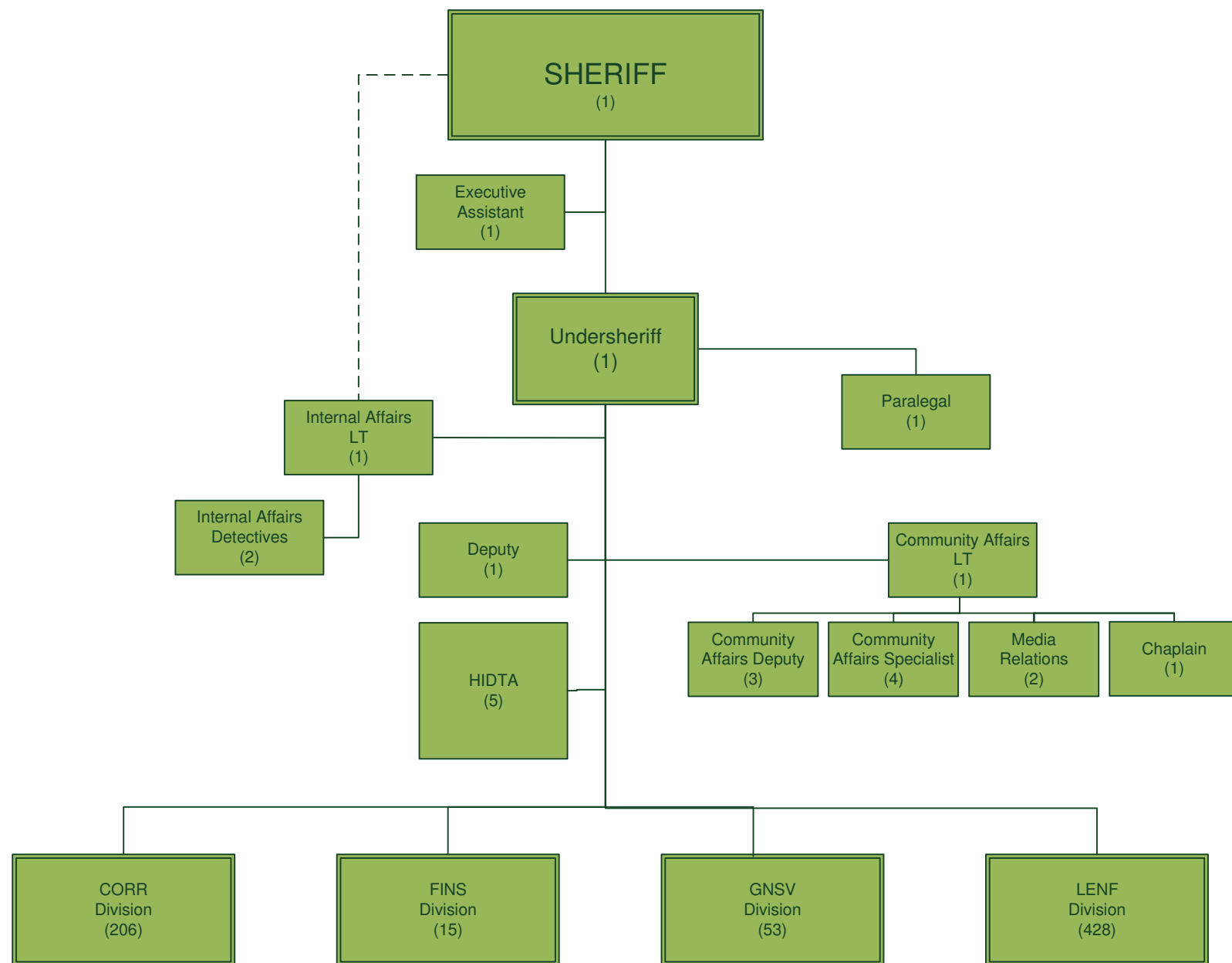
ST. JOHNS COUNTY SHERIFF'S OFFICE

ORGANIZATIONAL CHART
February 25, 2020

726 FTEs
Agency Wide

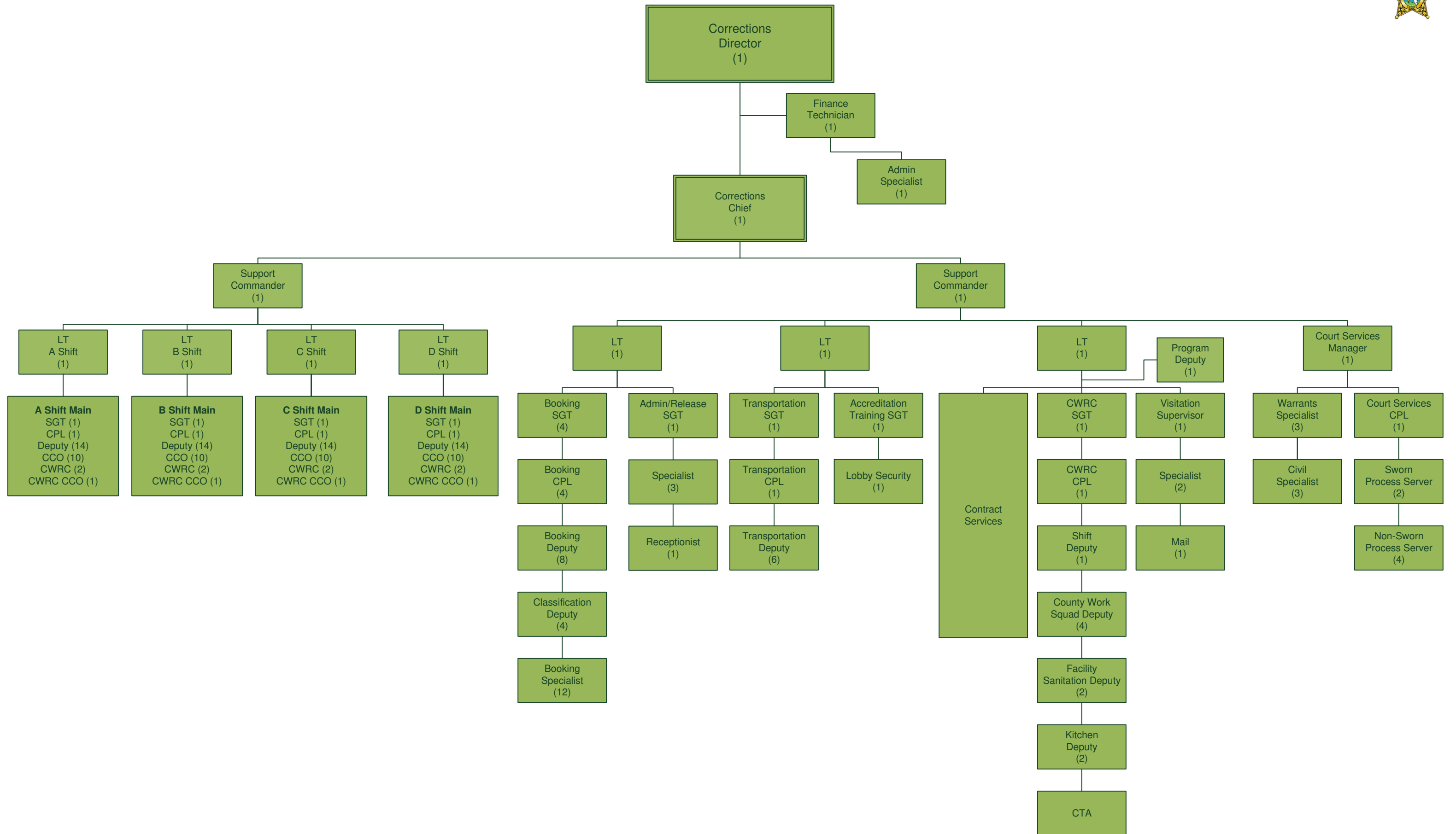
Office of the Sheriff

24 FTEs



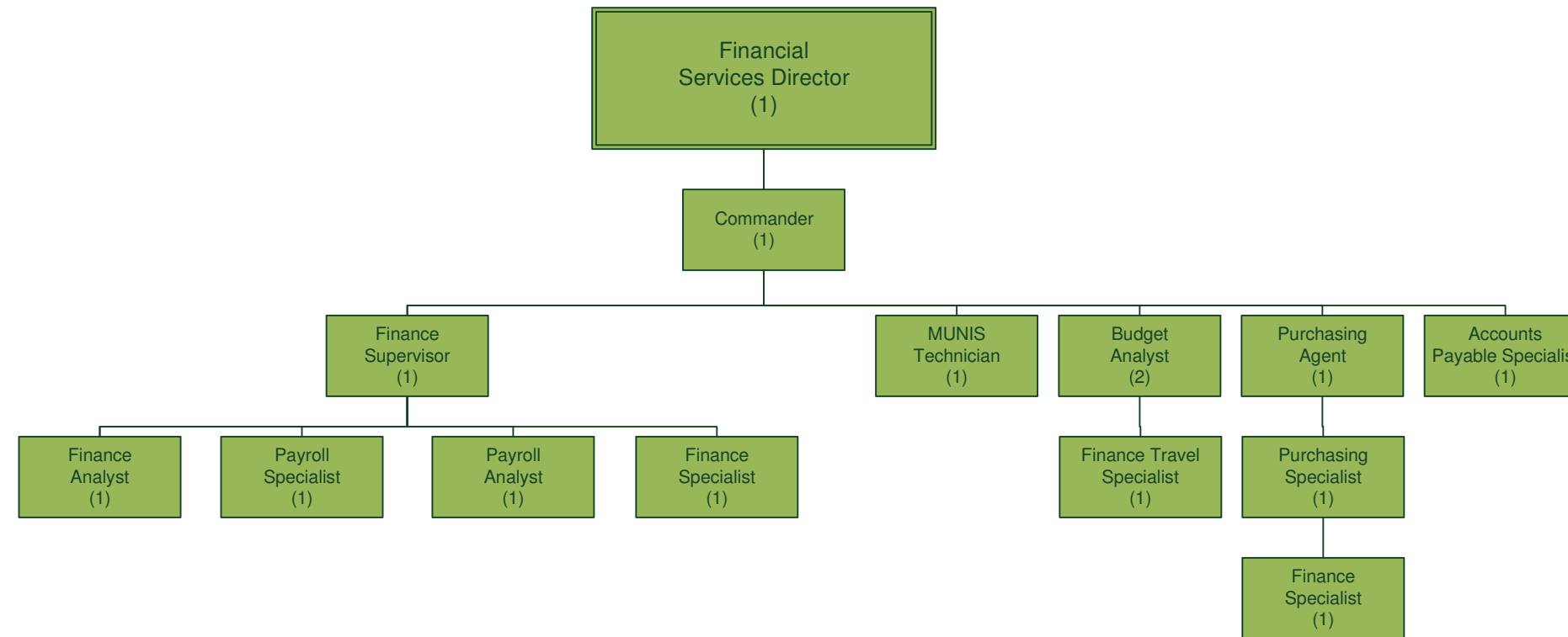
Division of Corrections

206 FTEs



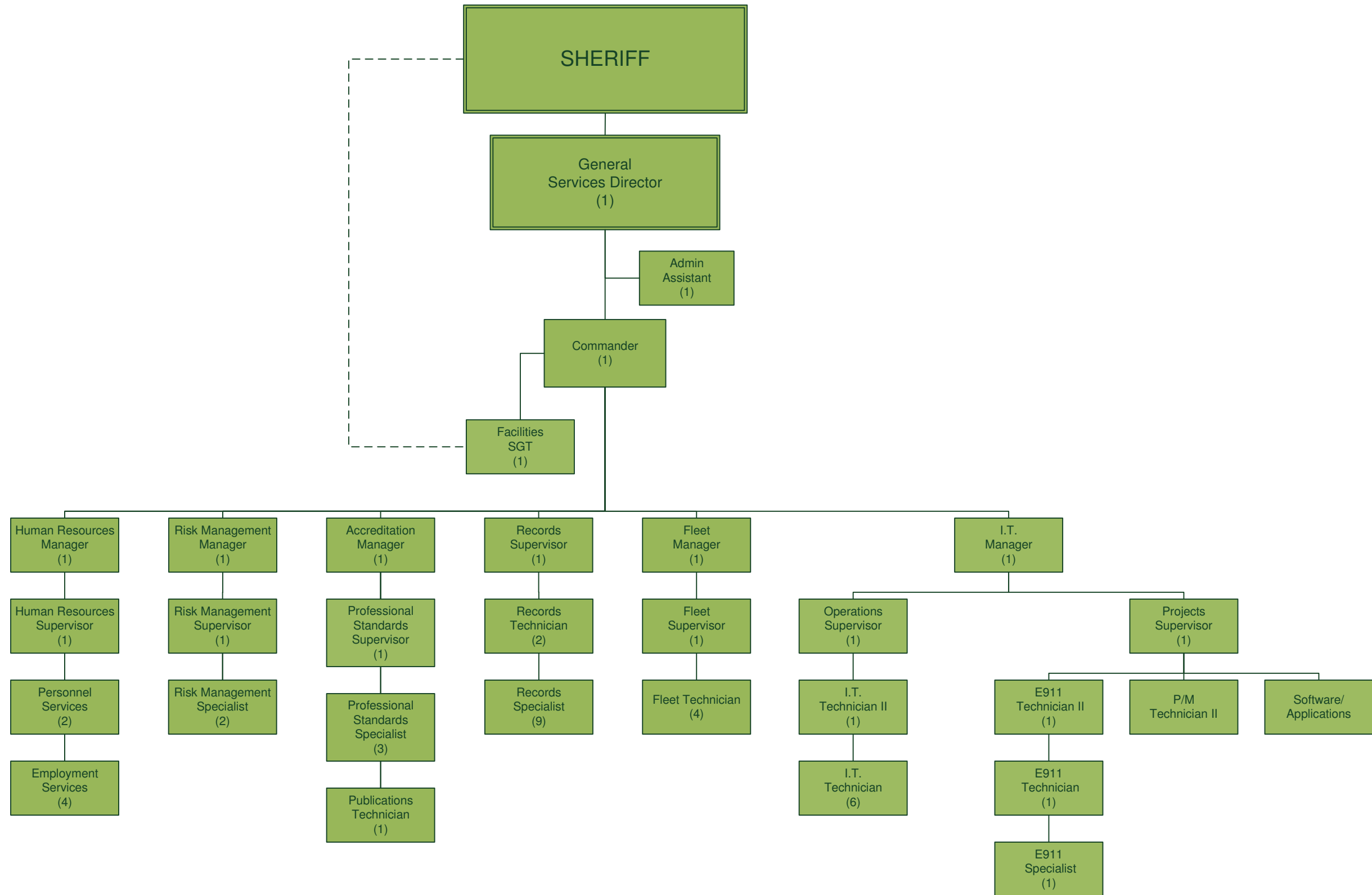
Division of Financial Services

15 FTEs



Division of General Services

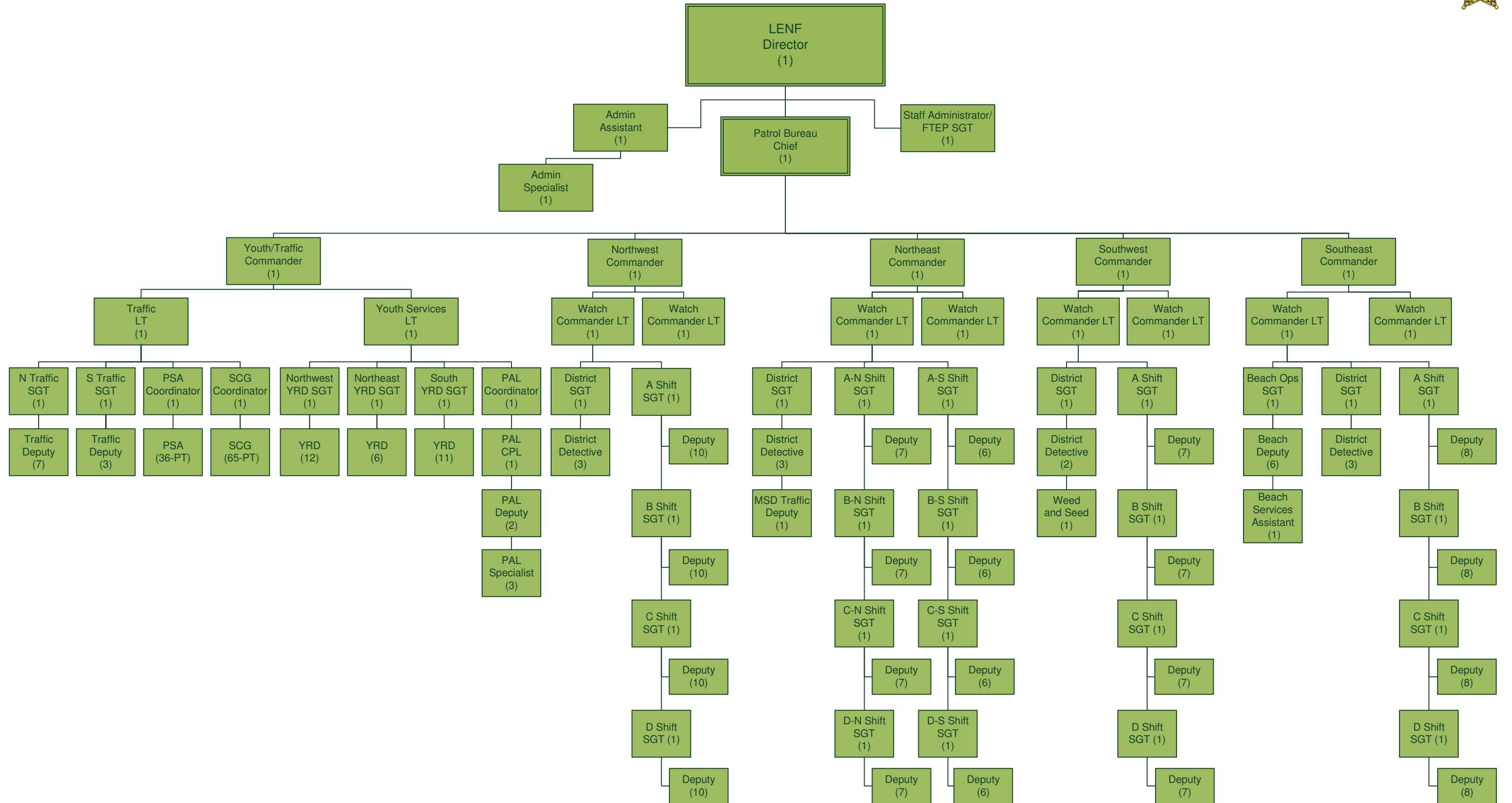
53 FTEs



Division of Law Enforcement

Patrol Bureau

270 FTEs



Division of Law Enforcement

Central Bureau

158 FTEs

